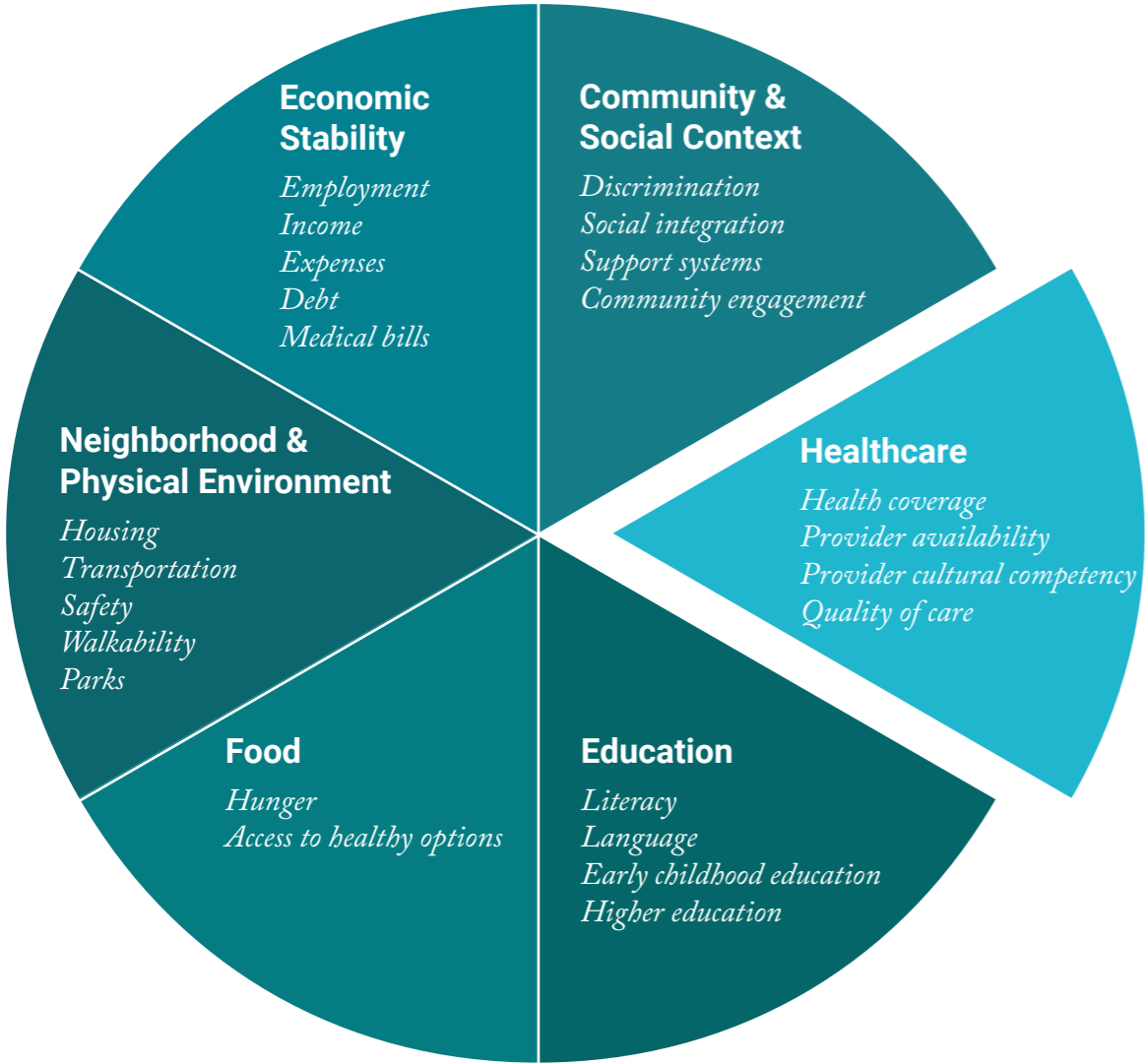


# SOCIAL DETERMINANTS OF HEALTH: HOW HEALTHCARE IMPACTS HEALTH STATUS



## HEALTHCARE

### COST

**ELIGIBILITY**

*Who is covered?*

**BENEFIT**

*What is covered?*

**COST SHARING**

*How much is covered?*

**REIMBURSEMENT**

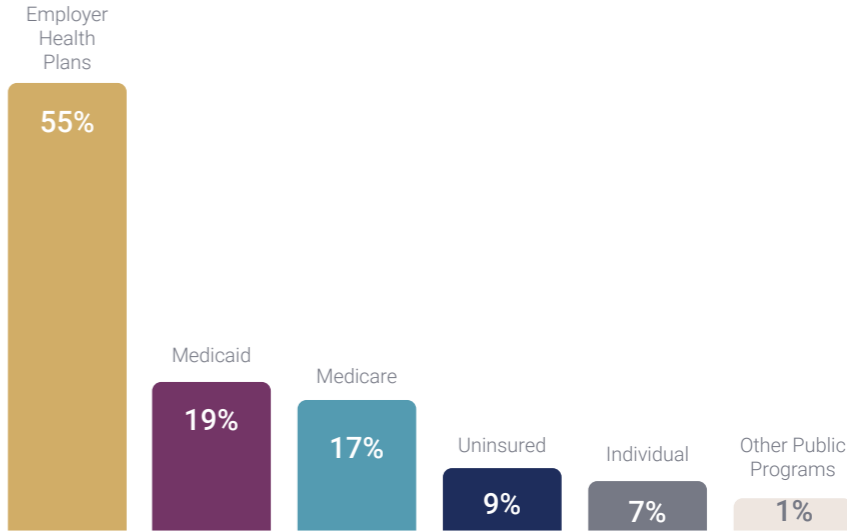
*How much is paid?*

**DEBT**

*How much is owed?*

### ACCESS

*Along with financial, social and cultural barriers, healthcare coverage often determines how easily individuals obtain medical services.*



*U.S. Healthcare Coverage*

### QUALITY

*Based on health outcome, efficacy and quality of life*